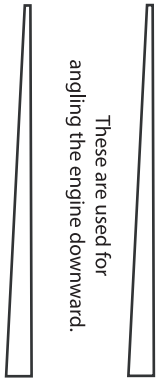


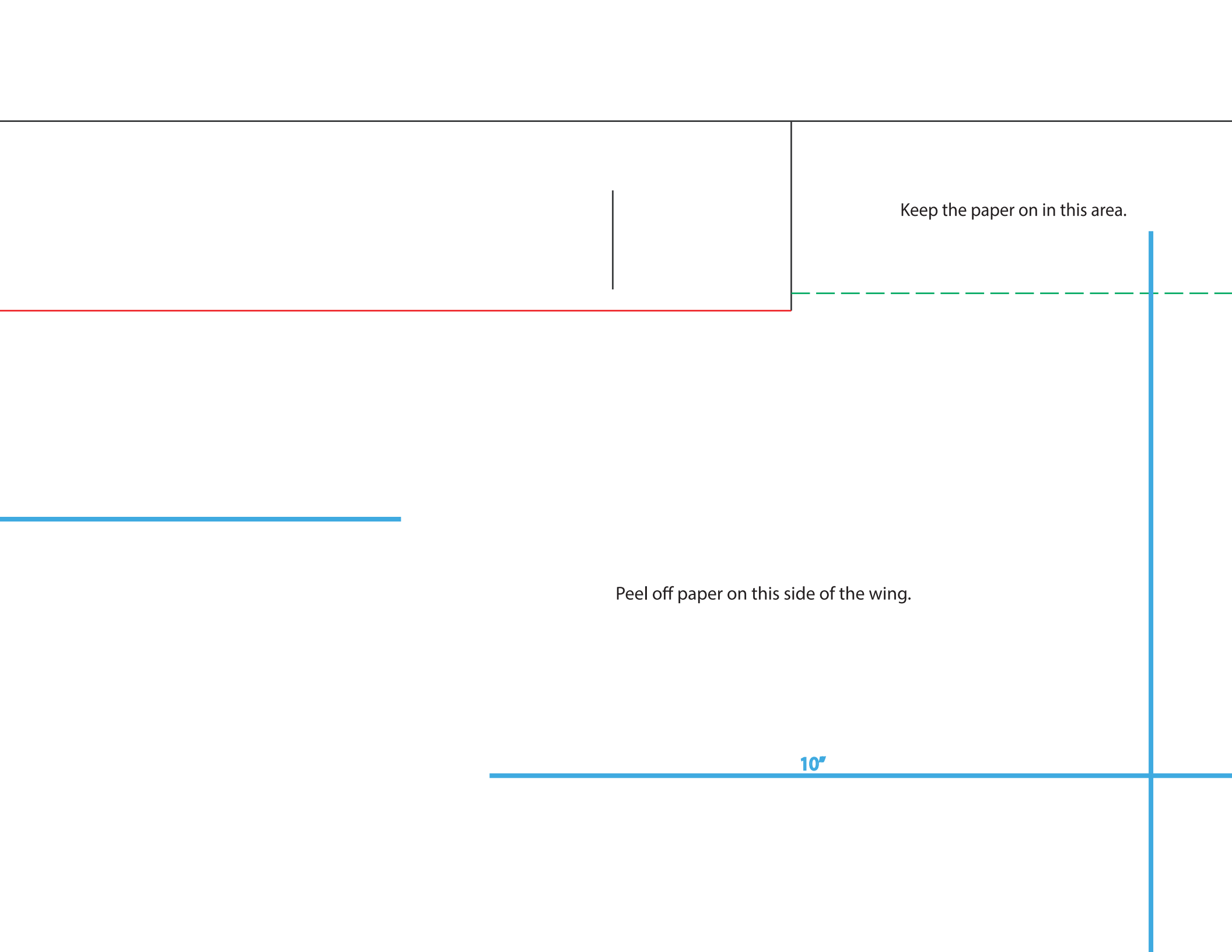
Make this out of 3/16" or 1/8" hobby plywood.



These are used for angling the engine downward.

Keep paper on both sides of the ailerons.

10'



Keep the paper on in this area.

The diagram shows a template for a paper wing. It features a top horizontal line, a vertical line on the right, and a horizontal line at the bottom. A red line runs horizontally across the middle, and a blue line runs horizontally near the bottom. A green dashed line is positioned between the red and blue lines. A vertical black line is located to the left of the green dashed line. A blue horizontal line is on the left side, and a blue vertical line is on the right side. The text 'Keep the paper on in this area.' is located in the upper right quadrant, and 'Peel off paper on this side of the wing.' is in the lower middle. The number '10'' is written in blue at the bottom right.

Peel off paper on this side of the wing.

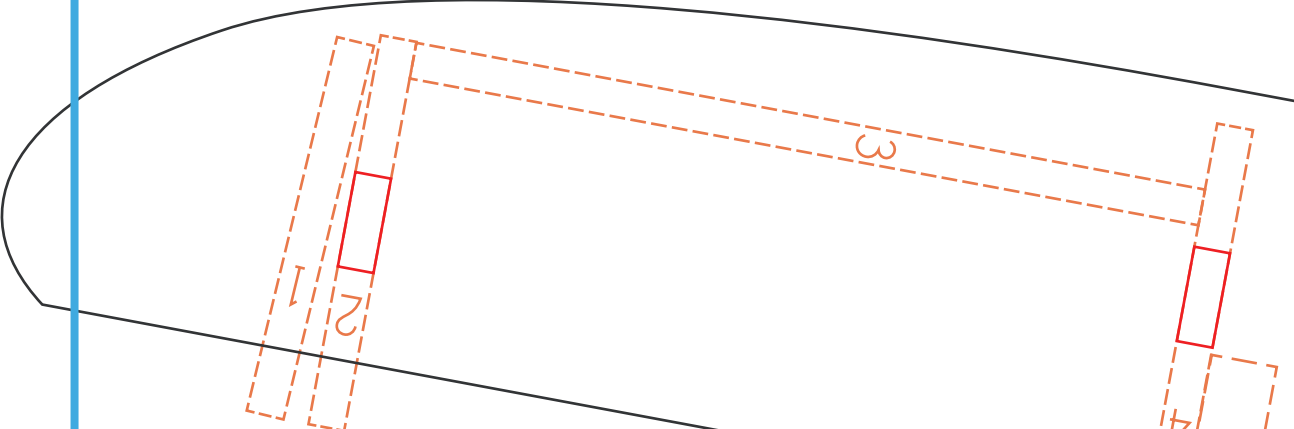
10"

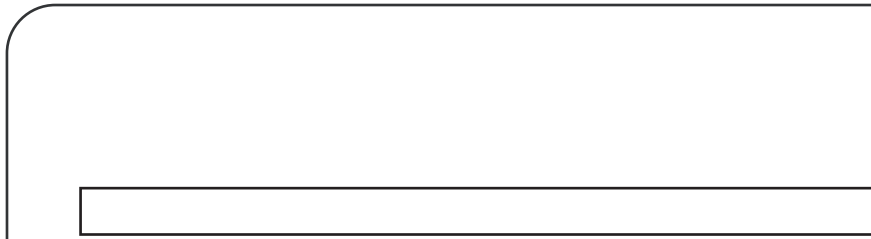
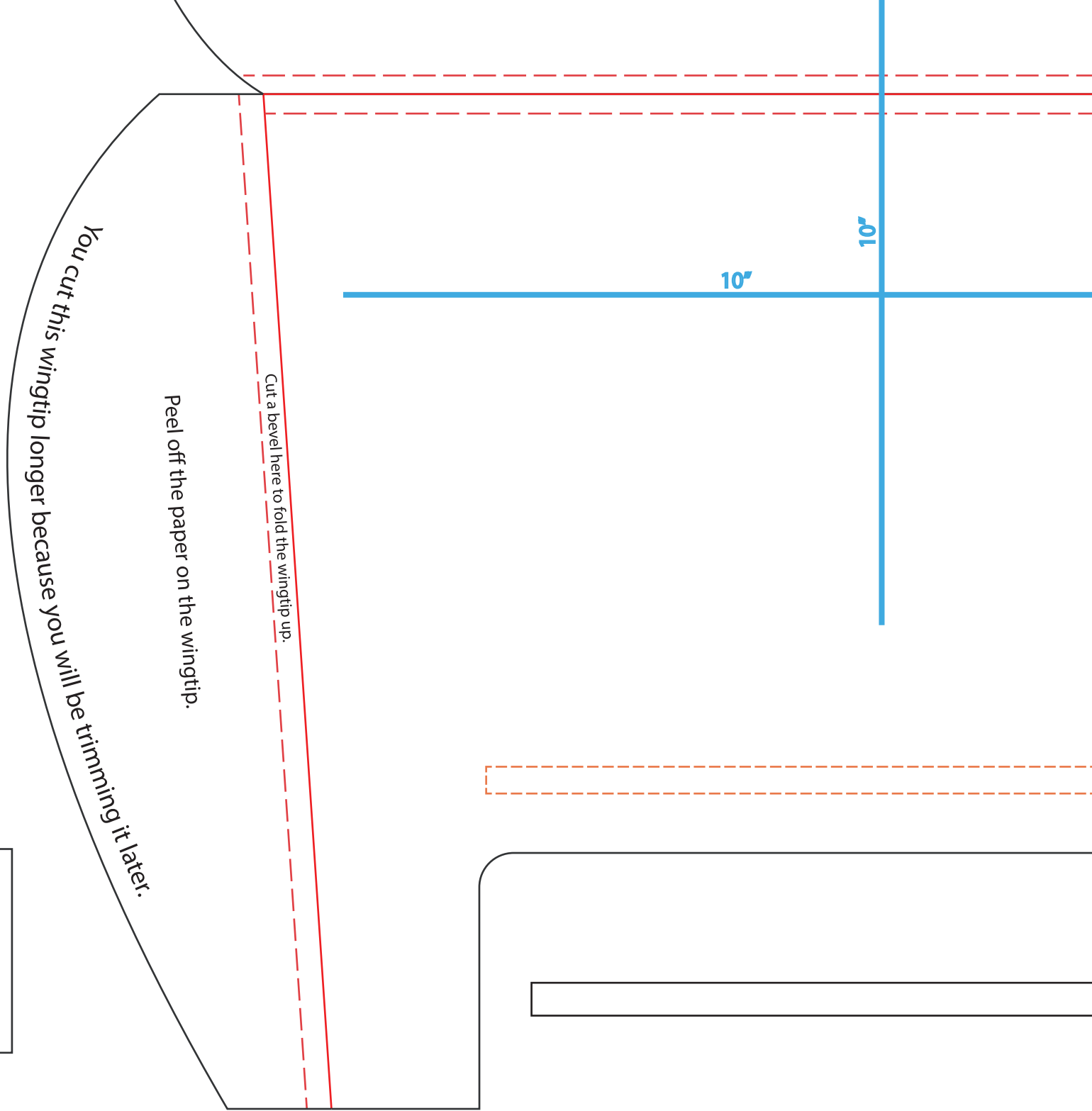
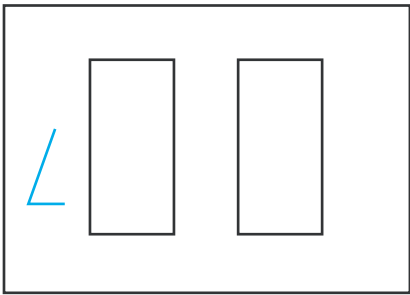
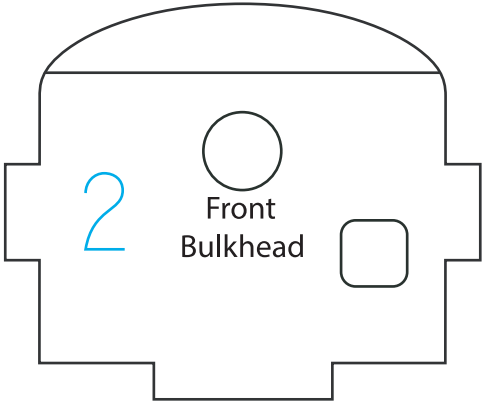
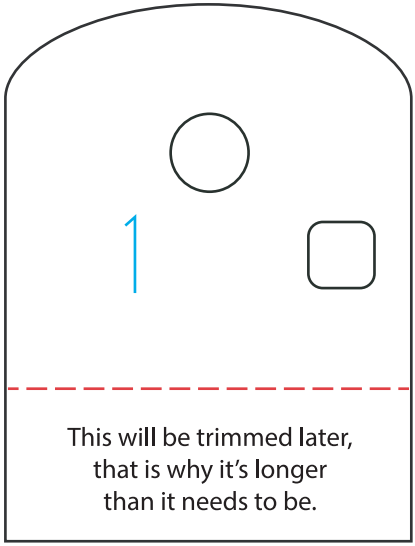
10'

Cut off the foam but leave the

The front of this piece  
gets trimmed to size.

FRONT

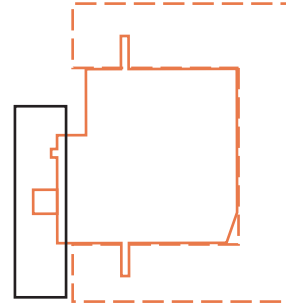




Cut a 45° Degree Bevel between the top wing and the lower wing before glueing.

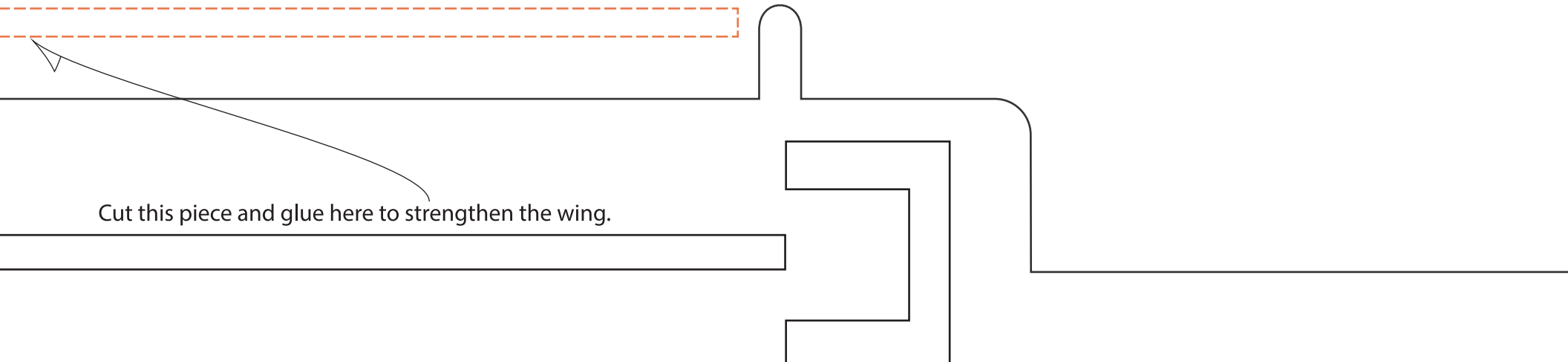
10"

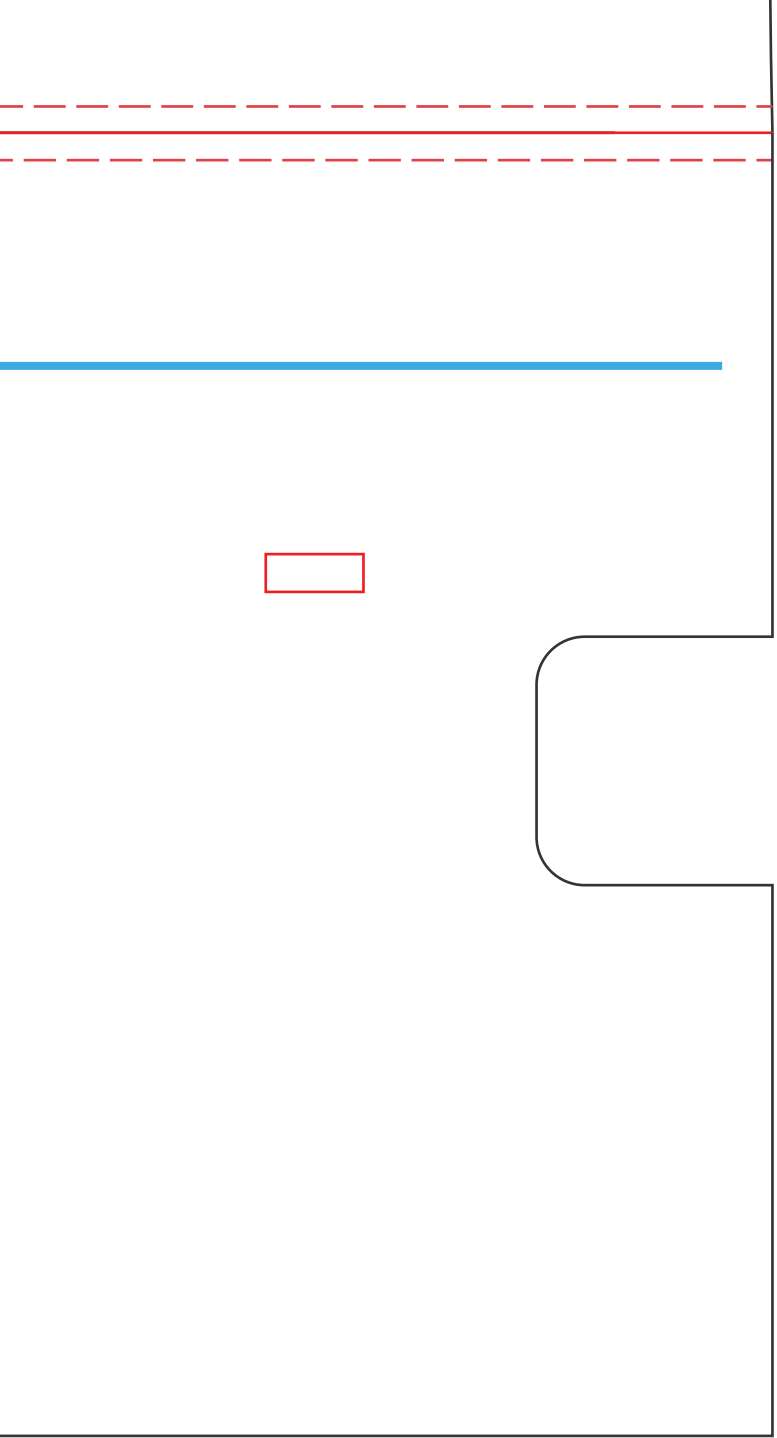
10"



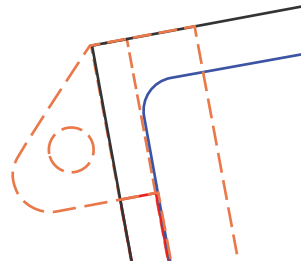
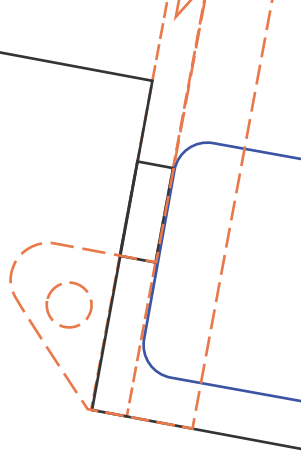
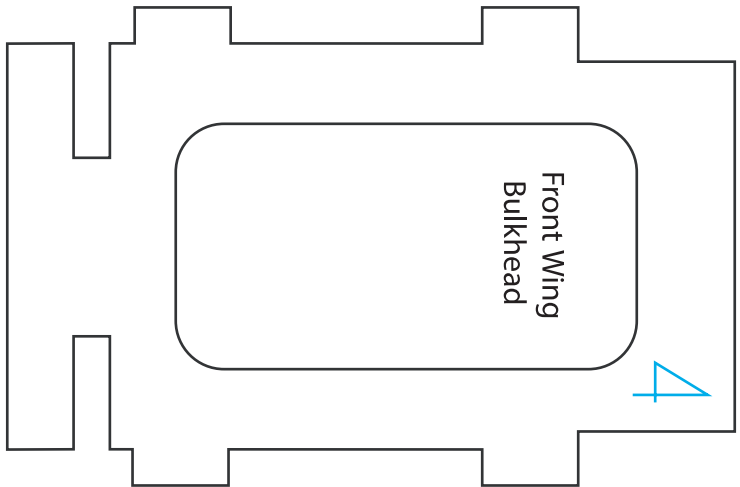
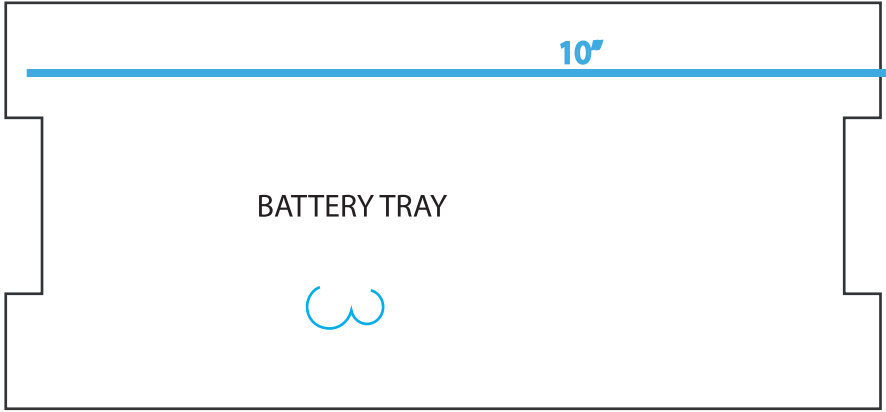
Keep the paper on in this side of the wing.

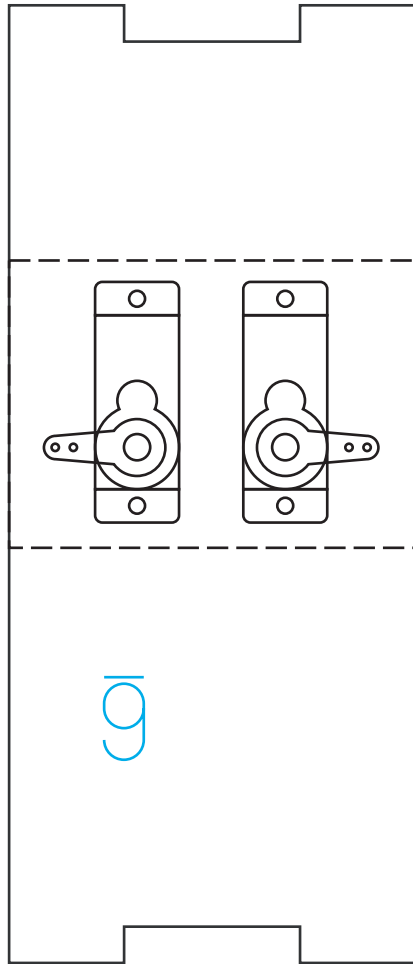
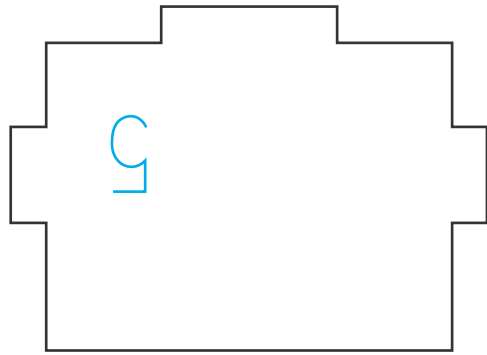
Cut this piece and glue here to strengthen the wing.



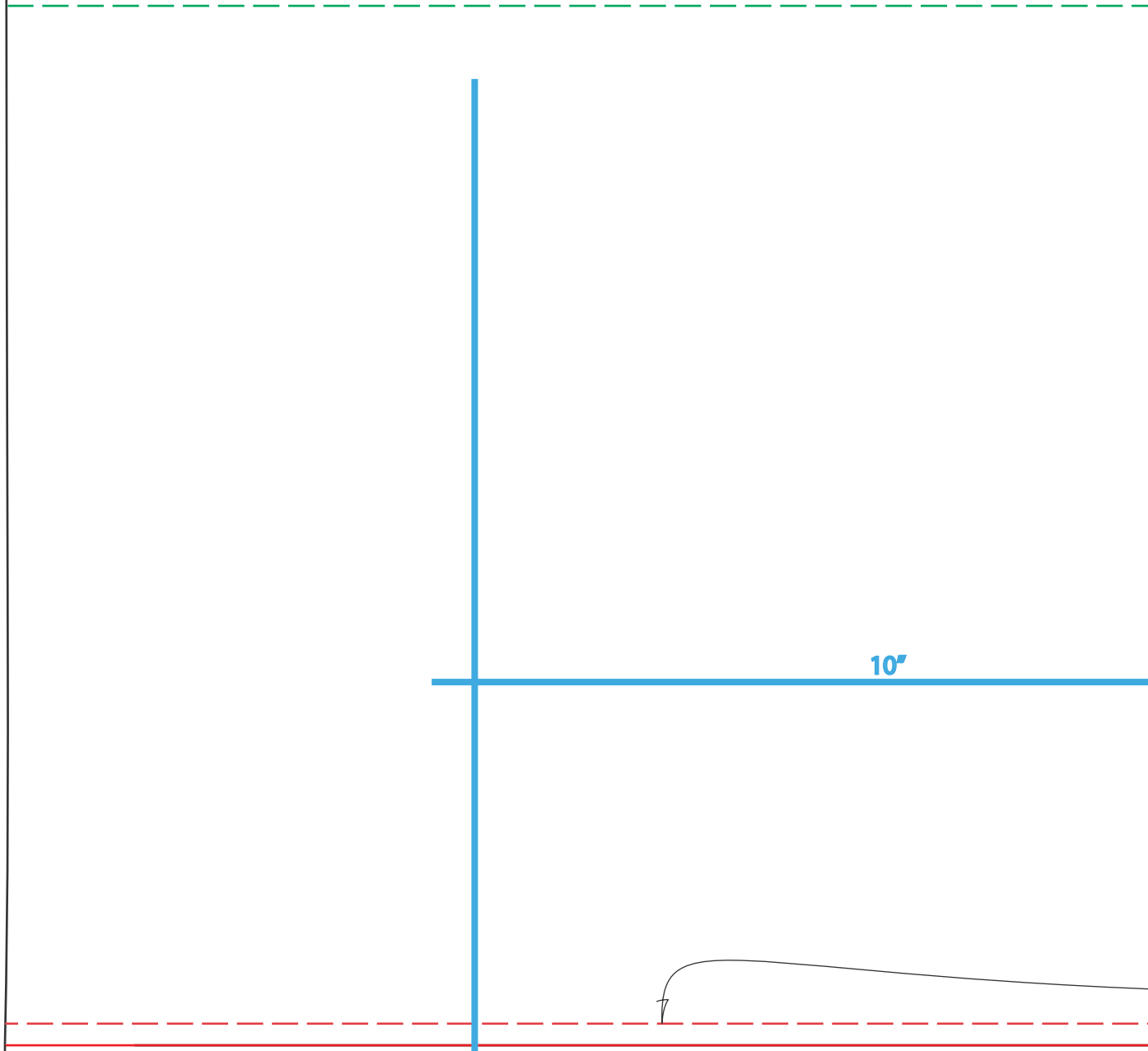


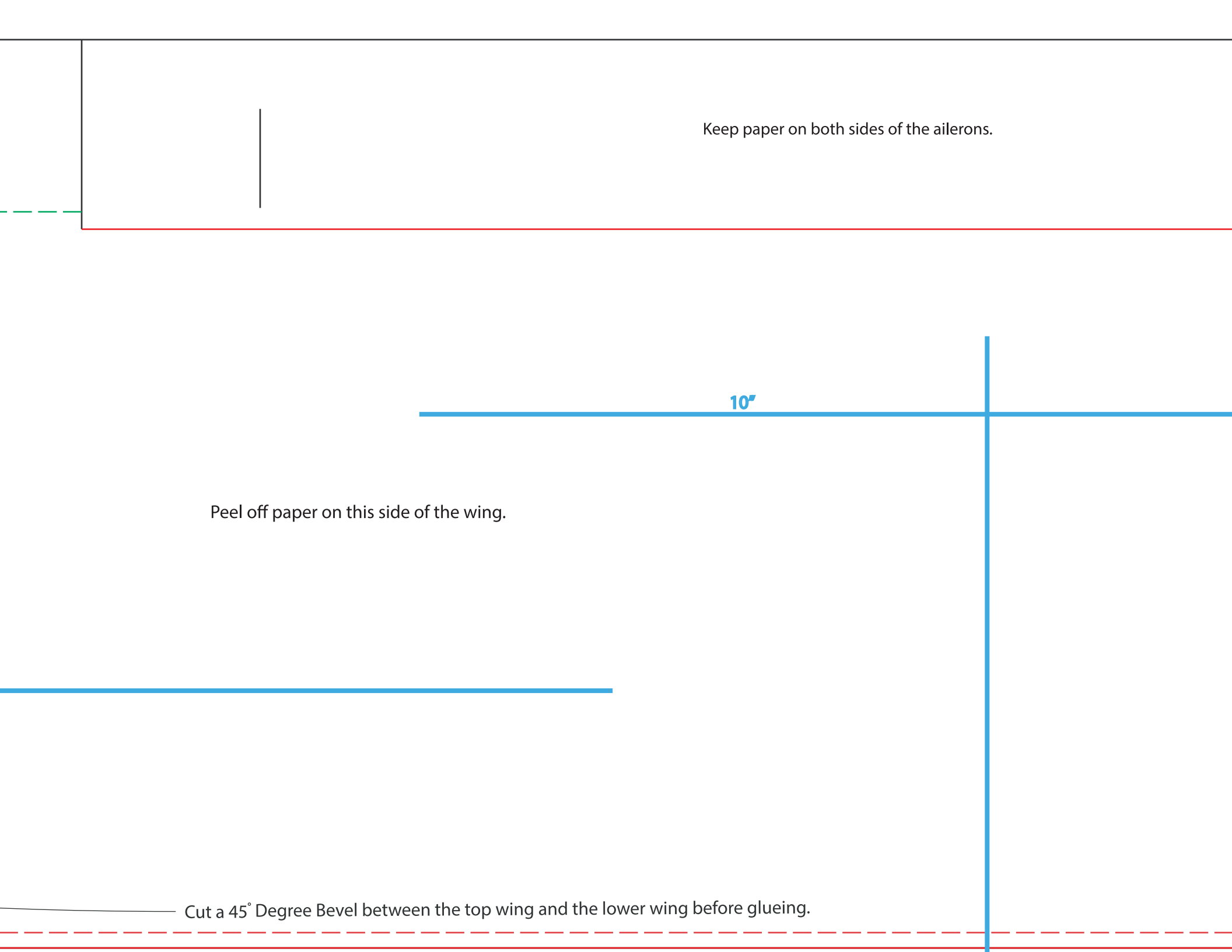
10'





Keep the paper on in this area.





Keep paper on both sides of the ailerons.

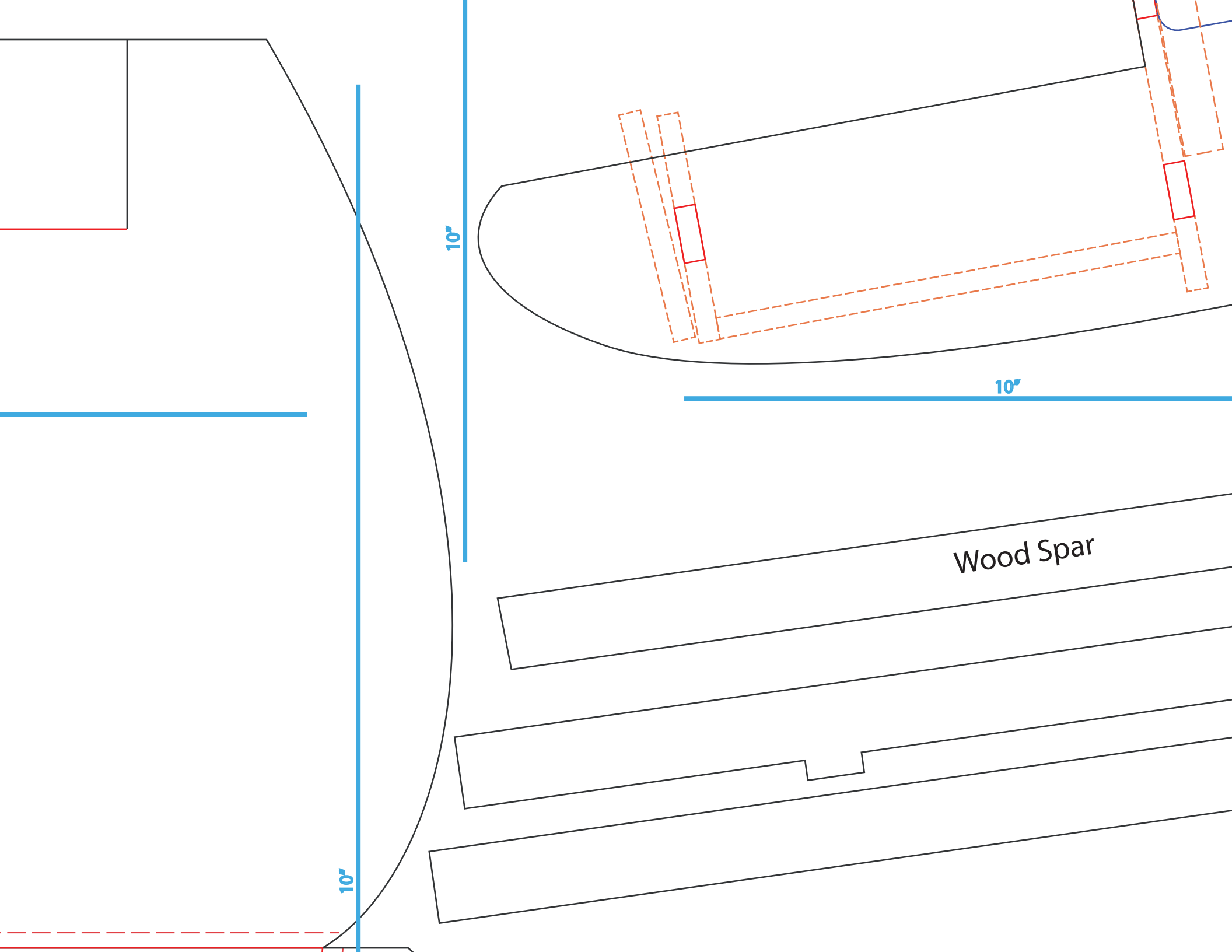
The diagram shows a white rectangular area representing a wing section. A vertical black line is positioned near the left edge. A horizontal red line runs across the bottom of the white area. A horizontal blue line is drawn above the red line, starting from the left edge and extending to the right. A vertical blue line is drawn to the right of the horizontal blue line, extending from the blue line down to the red line. A horizontal blue line segment is drawn above the vertical blue line, extending from the vertical blue line to the right edge of the page. A horizontal dashed green line is located at the top left of the white area, extending from the left edge to the vertical black line. A horizontal dashed red line is located at the bottom of the page, below the red line.

Peel off paper on this side of the wing.

10"

Cut a 45° Degree Bevel between the top wing and the lower wing before glueing.



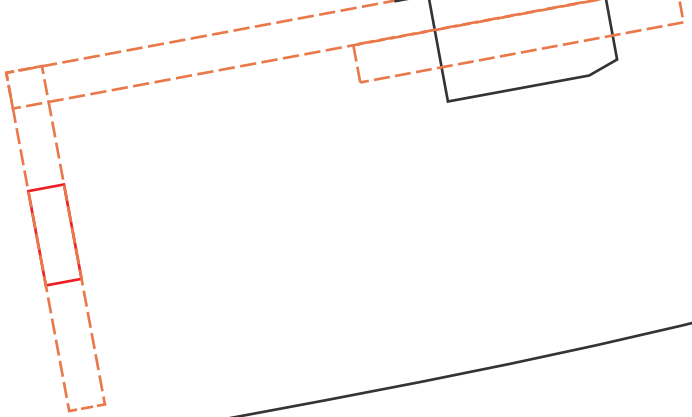


10'

10'

Wood Spar

10'



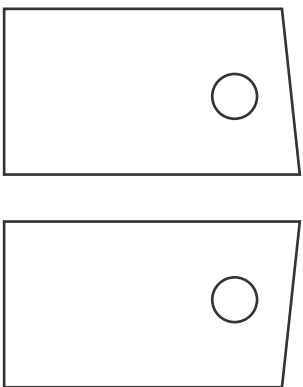
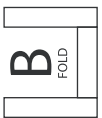
10'

Make this out of 3/16" or 1/8" hobby plywood.

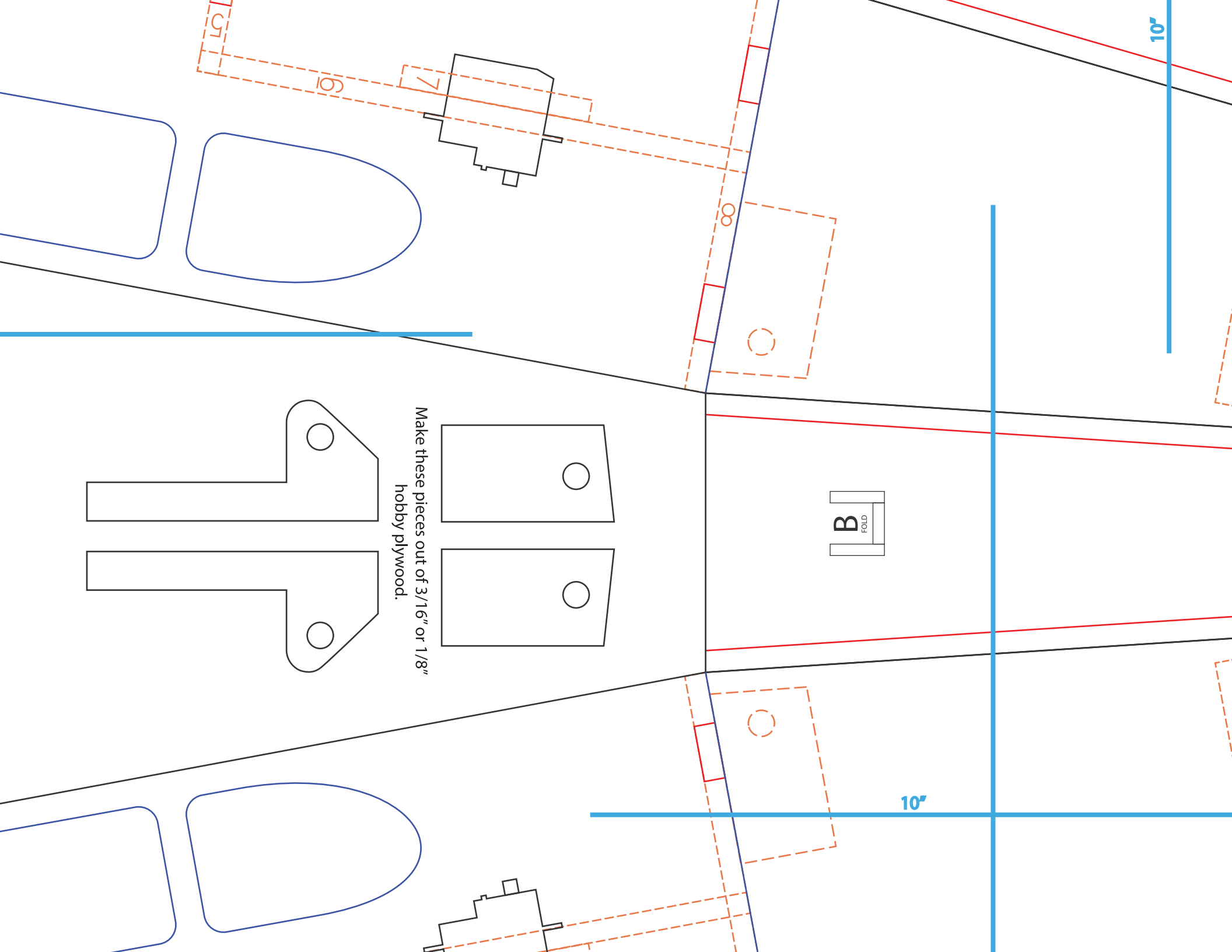
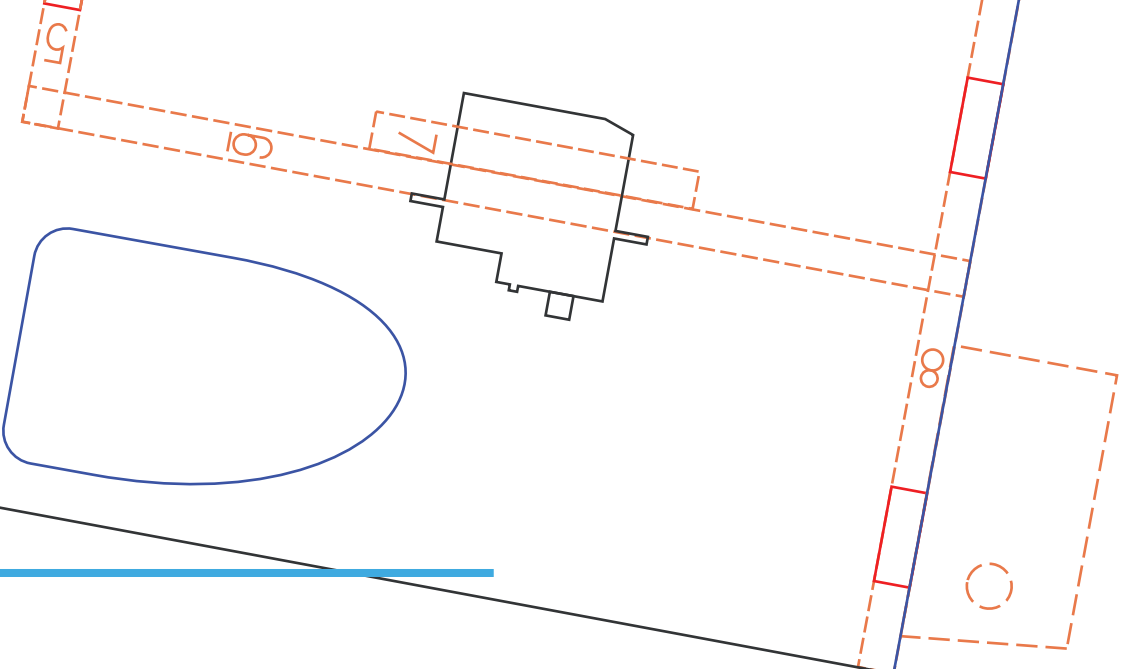
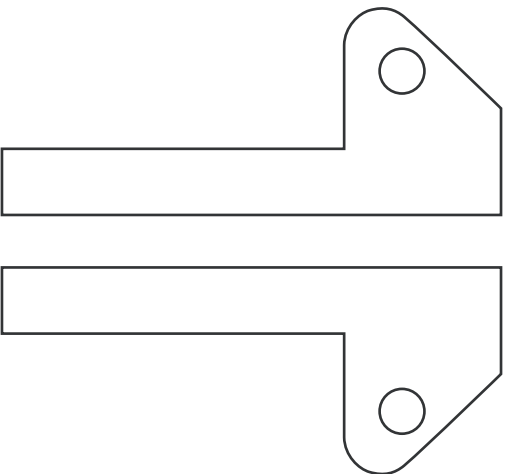
10'

10"

10"



Make these pieces out of 3/16" or 1/8" hobby plywood.



10'

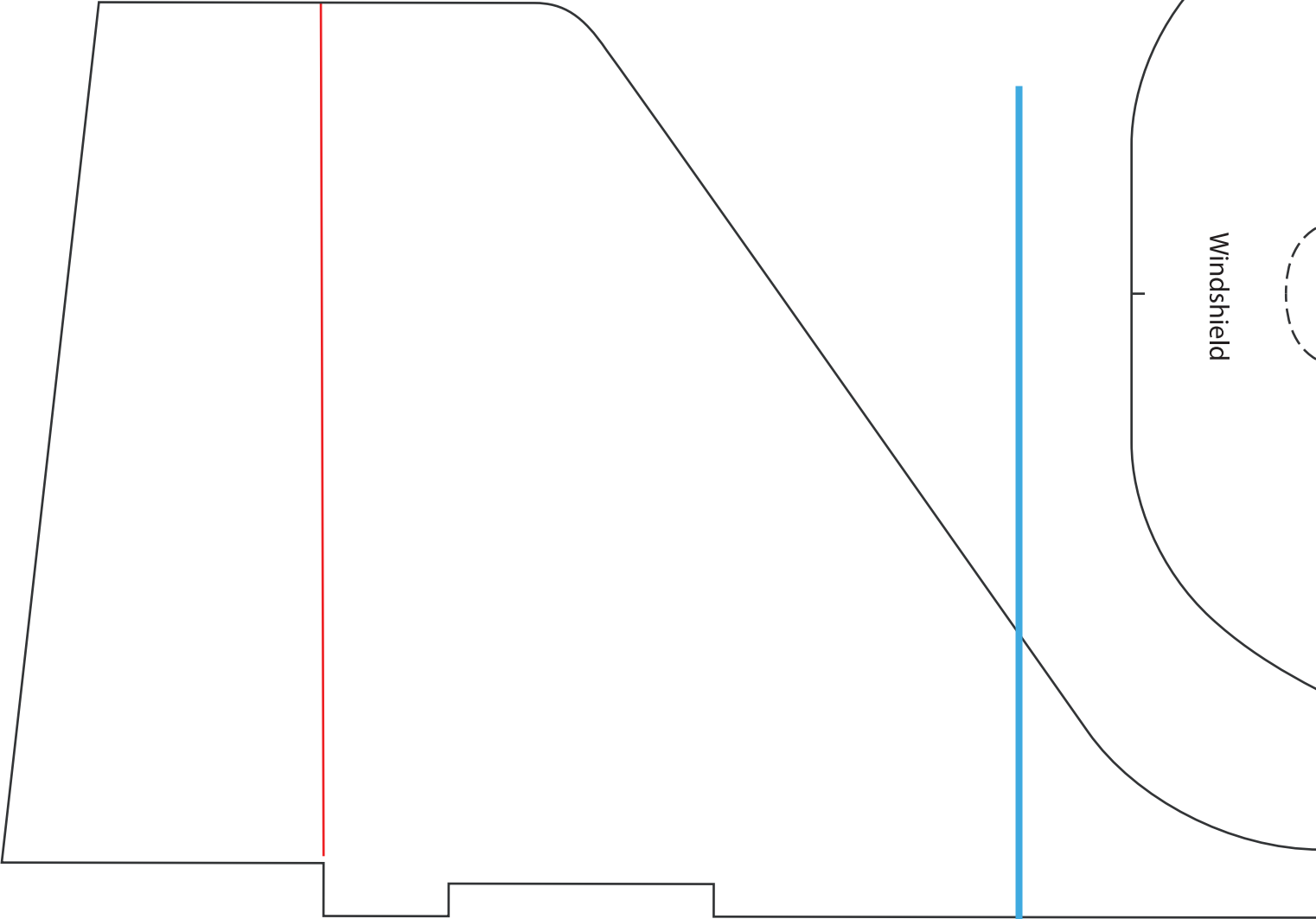
paper.

Peel the paper off on the inside of this piece so it can curve around the fuselage.

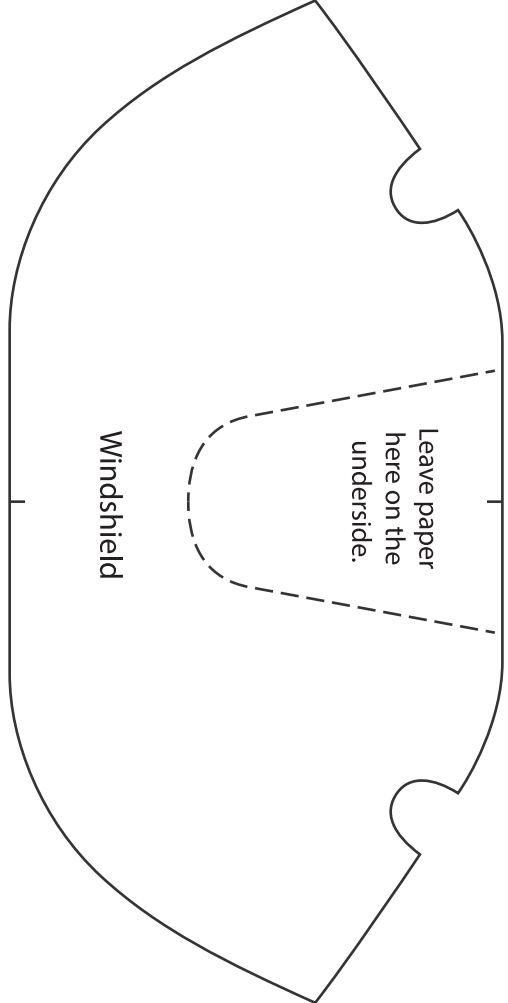
This piece goes on the bottom of the fuselage

Cut off the foam but leave the paper.

Copyright ©2024 13thSquadron. All Rights Reserved.  
Commercial use of our plans are prohibited.

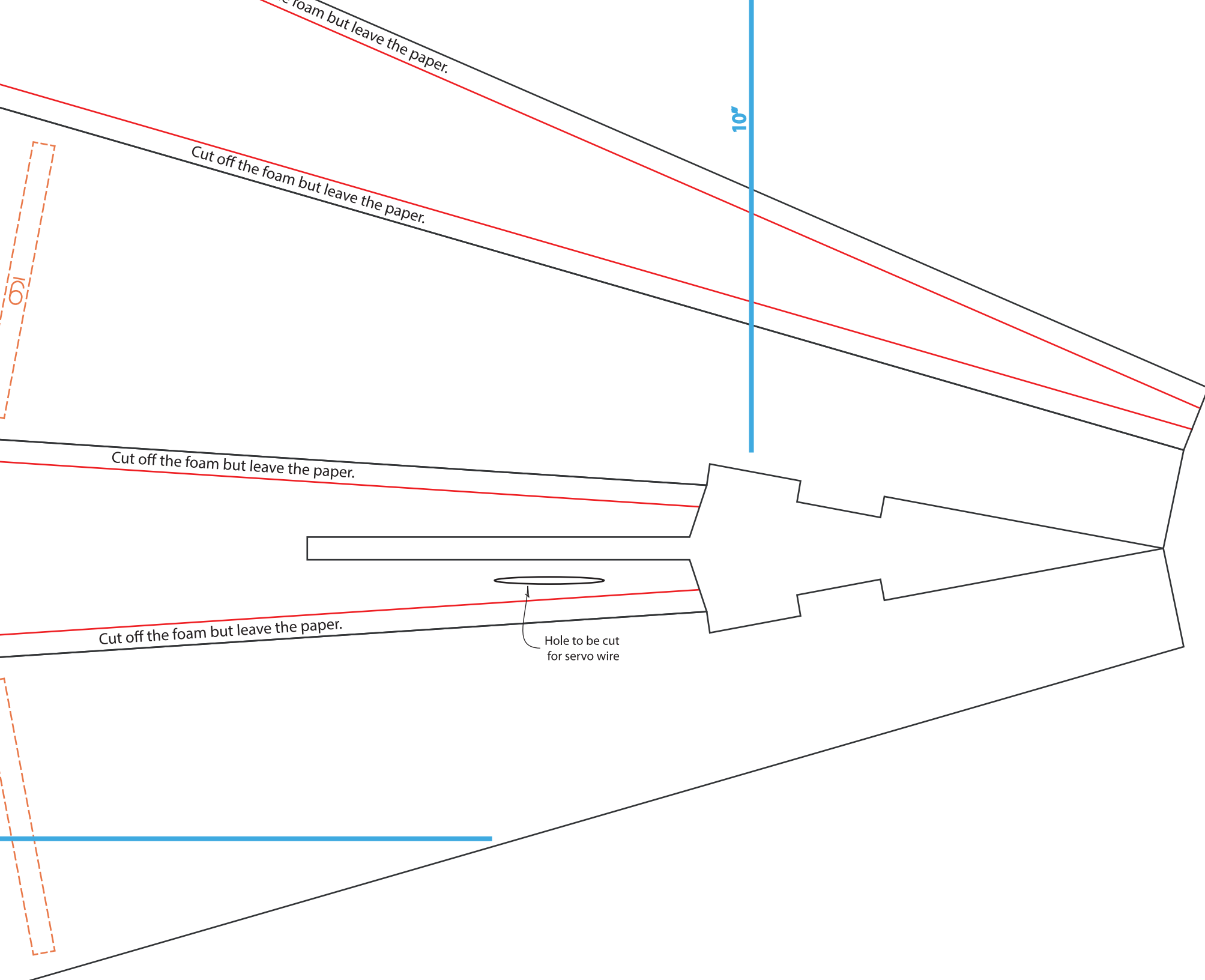


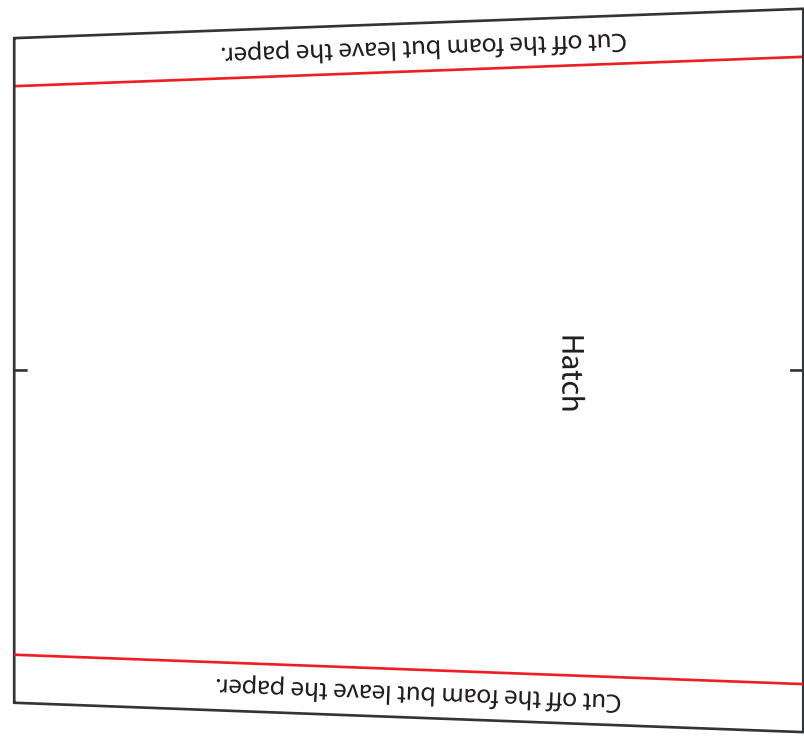
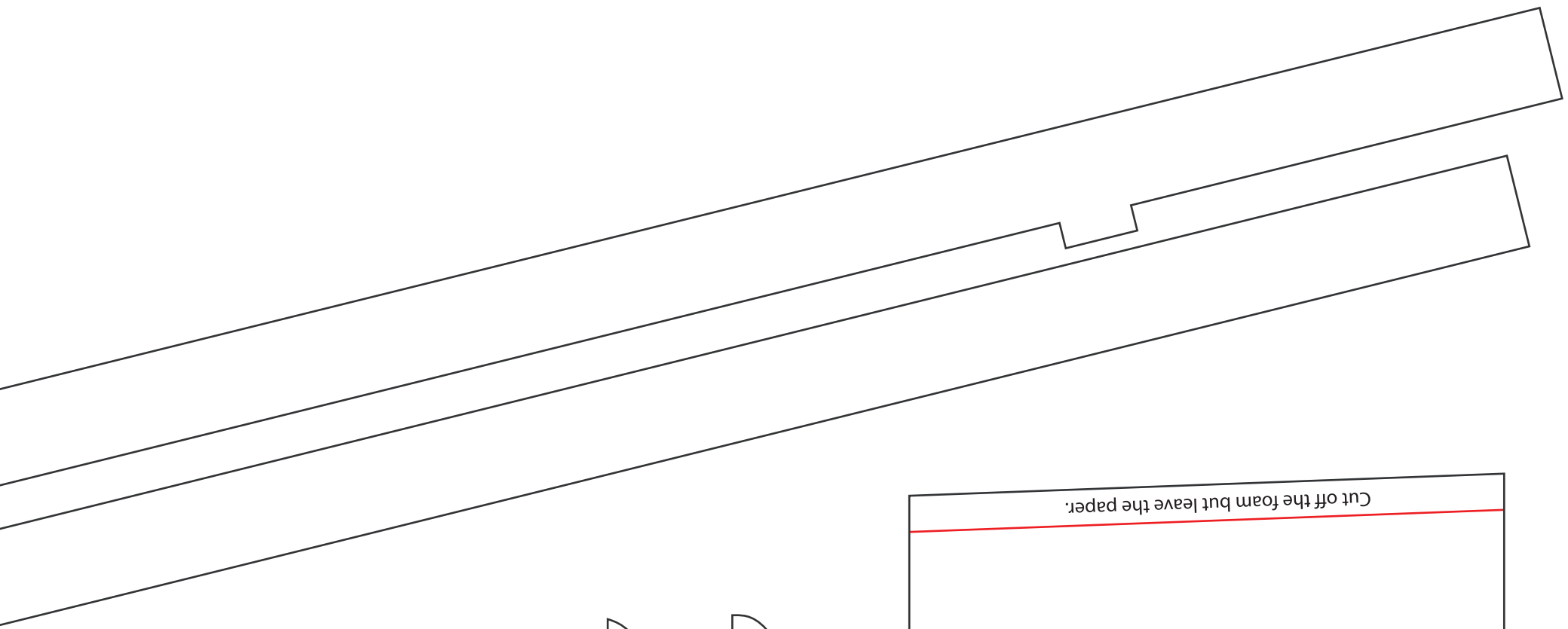
Cut off the f

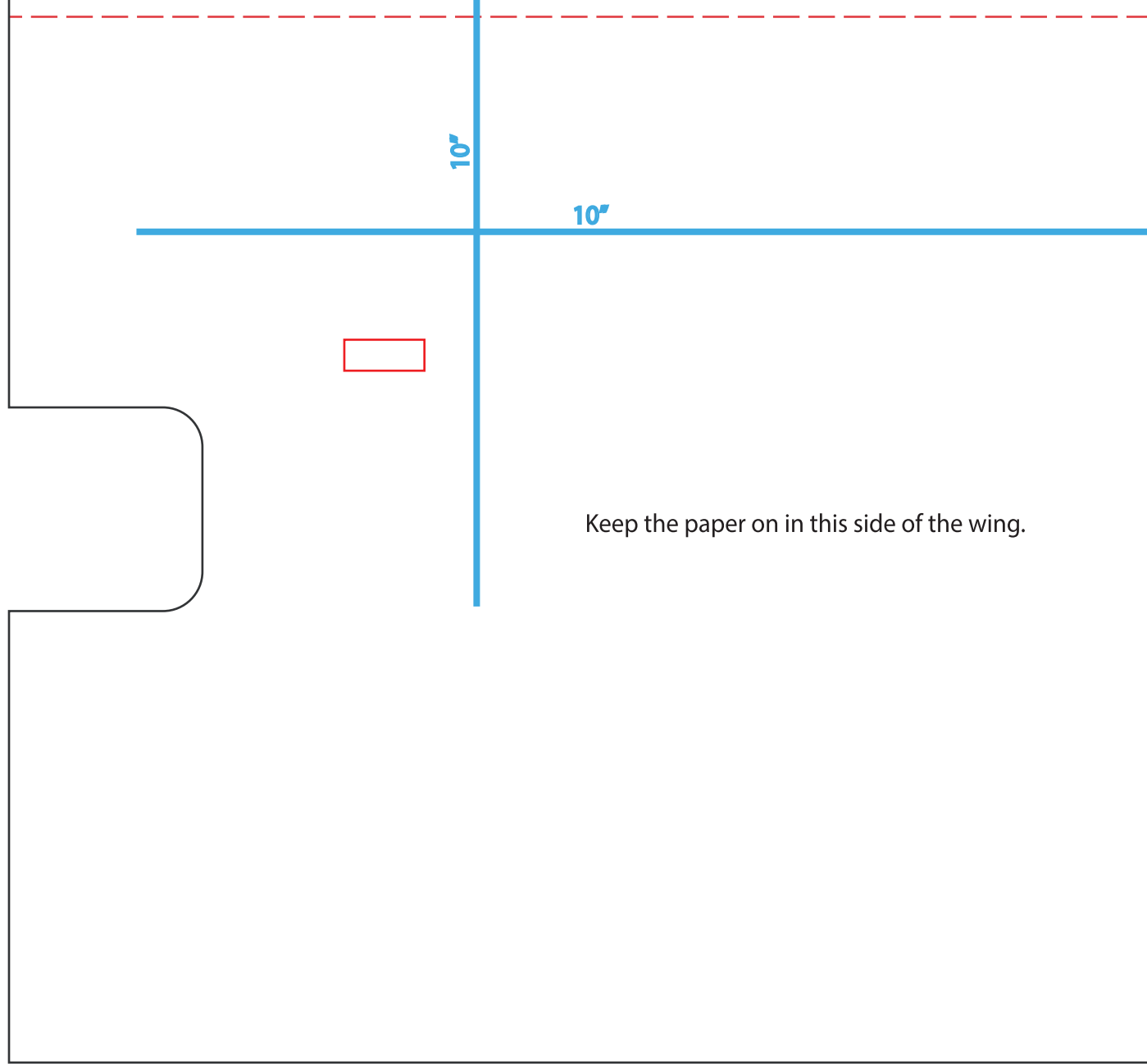
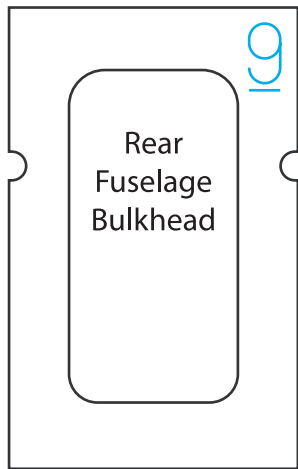
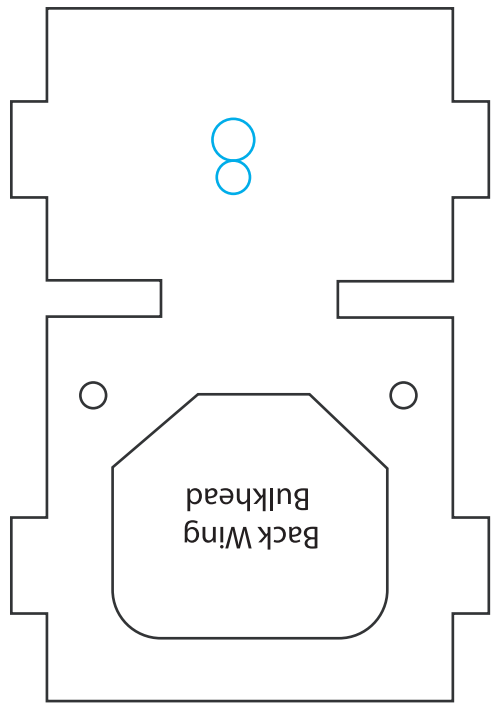


Windshield

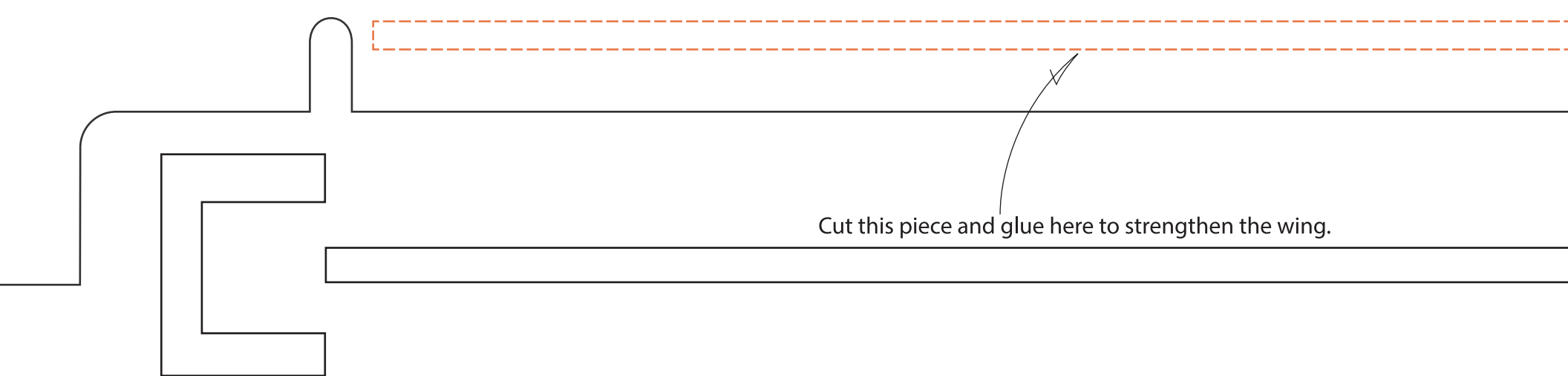
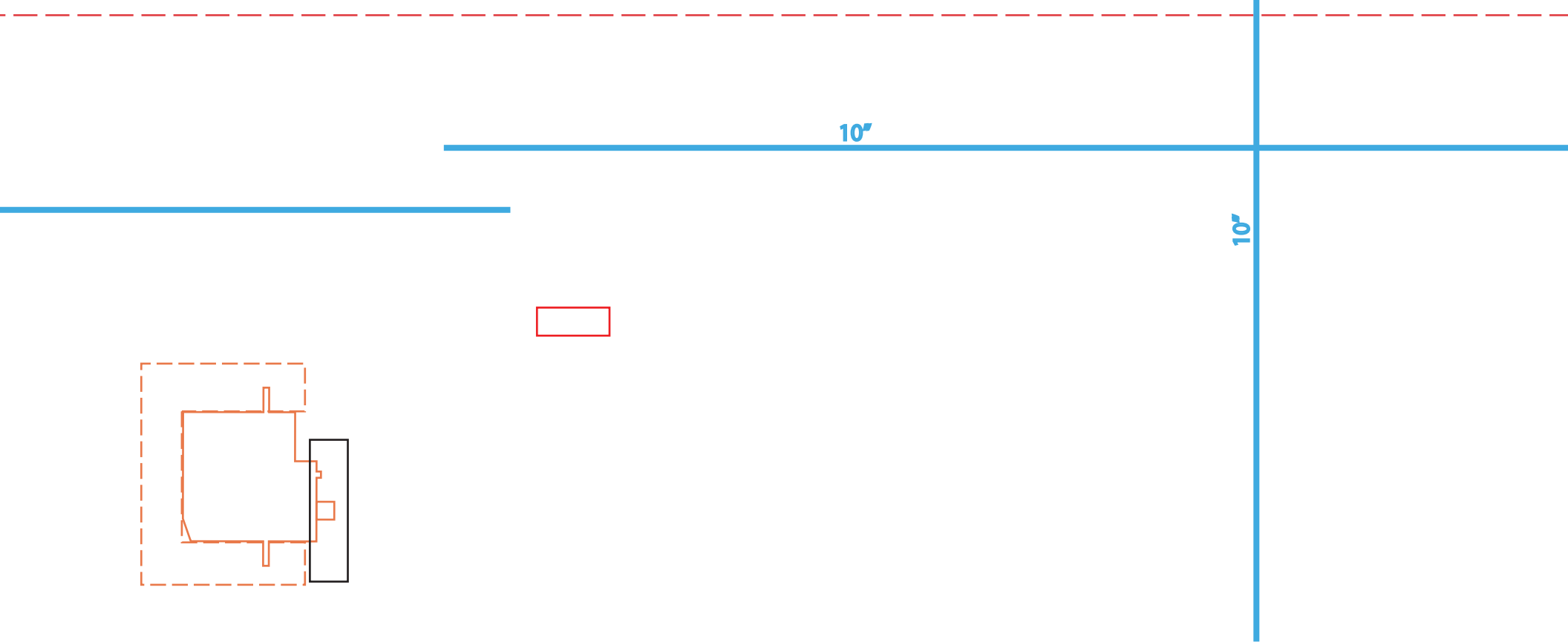
Leave paper here on the underside.











Copyright ©2024 13thSquadron. All Rights Reserved.  
Commercial use of our plans are prohibited.

